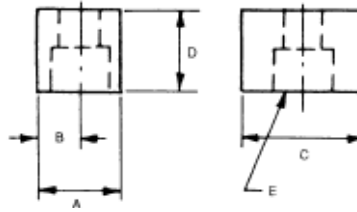


- ▶ Case hardened, black oxide finish
- ▶ Precision ground
- ▶ "A" dimension...+.000-.001

**Plain Fixture Keys**

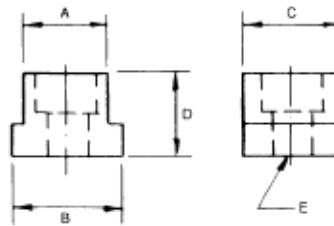
PART #	A	B	C	D	For Screw E
K-10	.500	1/4	3/4	1/2	1/4
K-15	.5625	9/32	3/4	1/2	1/4
K-20	.625	5/16	3/4	1/2	5/16
K-30	.6875	11/32	1	1/2	5/16
K-40	.750	3/8	1-1/4	1/2	5/16
K-50	.8125	13/32	1-1/4	1/2	5/16



- ▶ Case hardened, black oxide finish
- ▶ Precision ground
- ▶ "A" dimension...+.000-.001
- ▶ "B" dimension...+.000-.001
- ▶ "C" dimension...+.000-.001

**Fixture Step Keys**

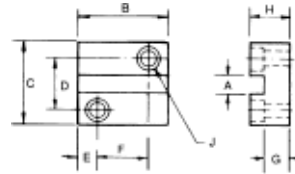
PART #	A	B	C	D	E
SK-5	.4375	.5625	.5625	1/2	10-24
SK-10	.500	.625	.625	1/2	1/4
SK-15	.5625	.6875	.6875	1/2	1/4
SK-20	.625	.750	.750	1/2	5/16
SK-30	.6875	.8125	.8125	1/2	5/16



- ▶ Case hardened, black oxide finish
- ▶ Machined from low carbon steel

**Guide Blocks**

PART #	A	B	C	D	E	F	G	H	Screw Size J
GB-1	3/16	13/16	3/4	7/16	3/16	7/16	3/16	5/16	#5 Fil Hd
GB-2	1/4	1-1/8	1	5/8	1/4	5/8	5/16	1/2	#10 Fil Hd
GB-3	5/16	1-1/2	1-3/8	7/8	5/16	7/8	3/8	5/8	1/4-20 Fil Hd
GB-4	3/8	1-5/8	1-1/2	1	3/8	7/8	3/8	5/8	1/4-20 Fil Hd
GB-5	1/2	1-5/8	1-1/2	1	3/8	7/8	3/8	5/8	1/4-20 Fil Hd



- ▶ Case hardened, black oxide finish
- ▶ Precision ground
- ▶ "A" dimension...+.001-.000

**Button Jig Feet**

PART #	A	B	C
BJF-250	.250	5/8	#10-Flat
BJF-375	.375	5/8	#10-Flat
BJF-500	.500	5/8	#10-Flat
BJF-625	.625	5/8	#10-Flat
BJF-750	.750	5/8	#10-Flat
BJF-875	.875	5/8	#10-Flat
BJF-1000	1.000	5/8	#10-Flat
BJF-3750	.375	7/8	5/16
BJF-5000	.500	7/8	5/16
BJF-6250	.625	7/8	5/16
BJF-7500	.750	7/8	5/16
BJF-8750	.875	7/8	5/16

PART #	A	B	C
BJF-10000	1.000	7/8	5/16
BJF-11250	1.125	7/8	5/16
BJF-7501	.750	1-1/4	3/8
BJF-8751	.875	1-1/4	3/8
BJF-10001	1.000	1-1/4	3/8
BJF-15000	1.500	1-1/4	3/8
BJF-20000	2.000	1-1/4	3/8
BJF-75	.750	1-3/8	1/2
BJF-100	1.000	1-3/8	1/2
BJF-1250	1.250	1-3/8	1/2
BJF-1750	1.750	1-5/8	1/2
BJF-2250	2.250	1-5/8	1/2

