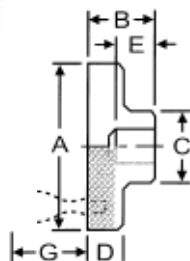


## Precision Control Knobs



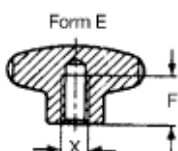
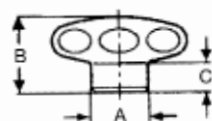
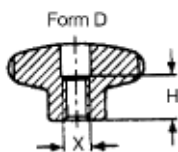
- ▶ Available in aluminum or 303 stainless steel
- ▶ Optional handle design
- ▶ Knurled rim design

|                 |                        | WITH HANDLE |   |       |       |      |     |         |
|-----------------|------------------------|-------------|---|-------|-------|------|-----|---------|
| Aluminum PART # | Stainless Steel PART # | Reamed Dia. | A | B     | C     | D    | E   | G       |
| CK-201          | CK-301                 | 3/8         | 2 | 1-1/8 | 13/16 | 9/16 | 7/8 | 1-9/32  |
| CK-202          | CK-302                 | Solid       | 2 | 1-1/8 | 13/16 | 9/16 | -   | 1-15/16 |
| CK-203          | CK-303                 | 5/8         | 3 | 1-1/4 | 1-1/4 | 9/16 | 7/8 | 1-9/32  |
| CK-204          | CK-304                 | Solid       | 3 | 1-1/4 | 1-1/4 | 9/16 | -   | 1-15/16 |

|                 |                        | WITHOUT HANDLE |           |   |       |       |       |     |
|-----------------|------------------------|----------------|-----------|---|-------|-------|-------|-----|
| Aluminum PART # | Stainless Steel PART # | Thread Size    | Reamed    | A | B     | C     | D     | E   |
| CK-210          | CK-310                 | -              | 1/4       | 1 | 13/16 | 1/2   | 3/8   | 5/8 |
| CK-211          | CK-311                 | -              | Solid Hub | 1 | 13/16 | 1/2   | 3/8   | -   |
| CK-212          | CK-312                 | 1/4-20         | -         | 1 | 13/16 | 1/2   | 3/8   | 5/8 |
| CK-213          | CK-313                 | 5/16-18        | -         | 1 | 13/16 | 1/2   | 3/8   | 5/8 |
| CK-214          | CK-314                 | -              | 3/8       | 2 | 1-1/8 | 13/16 | 9/16  | 7/8 |
| CK-215          | CK-315                 | -              | Solid Hub | 2 | 1-1/8 | 13/16 | 9/16  | -   |
| CK-216          | CK-316                 | 3/8-16         | -         | 2 | 1-1/8 | 13/16 | 9/16  | 7/8 |
| CK-217          | CK-317                 | 1/2-13         | -         | 2 | 1-1/8 | 13/16 | 9/16  | 7/8 |
| CK-218          | CK-318                 | -              | 5/8       | 3 | 1-1/4 | 1-1/4 | 11/16 | 7/8 |
| CK-219          | CK-319                 | -              | Solid Hub | 3 | 1-1/4 | 1-1/4 | 11/16 | -   |
| CK-220          | CK-320                 | 5/8-11         | -         | 3 | 1-1/4 | 1-1/4 | 11/16 | 7/8 |
| CK-221          | CK-321                 | 3/4-10         | -         | 3 | 1-1/4 | 1-1/4 | 11/16 | 7/8 |

## Stainless Steel Hand Knobs

Metric

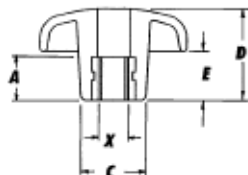


- ▶ Made from 303 stainless bar stock
- ▶ Shot blast finish
- ▶ Two styles in metric (blind or through hole)

| Tapped Through Hole (Form D) |            |      |      |        |      |      |
|------------------------------|------------|------|------|--------|------|------|
| PART #                       | X Thread   | D    | A    | B      | C    | H    |
| 564008D                      | M8 x 1.25  | 40mm | 18mm | 26.5mm | 11mm | 13mm |
| 565010D                      | M10 x 1.5  | 50   | 21   | 29     | 12   | 16   |
| 566012D                      | M12 x 1.75 | 60   | 25   | 33     | 12   | 20   |

| Blind Tapped Hole (Form E) |            |      |      |        |      |      |
|----------------------------|------------|------|------|--------|------|------|
| PART #                     | X Thread   | D    | A    | B      | C    | F    |
| 564006E                    | M6 x 1.0   | 40mm | 18mm | 26.5mm | 11mm | 12mm |
| 564008E                    | M8 x 1.25  | 40   | 18   | 26.5   | 11   | 12   |
| 565008E                    | M8 x 1.25  | 50   | 21   | 29     | 12   | 15   |
| 565010E                    | M10 x 1.5  | 50   | 21   | 29     | 12   | 15   |
| 566010E                    | M10 x 1.5  | 60   | 25   | 33     | 12   | 18   |
| 566012E                    | M12 x 1.75 | 60   | 25   | 33     | 12   | 18   |

## Through Hole Plastic Hand Knobs



- ▶ Available in inch and metric sizes
- ▶ Handle made from glass-fiber reinforced polyamide
- ▶ Black matte finish
- ▶ Bushing from steel, zinc-plated finish

| INCH   |          |     |      |      |     |
|--------|----------|-----|------|------|-----|
| PART # | X Thread | A   | B    | C    | E   |
| 7132AC | 1/4-20   | .43 | 1.26 | .55  | .39 |
| 7140AD | 5/16-18  | .51 | 1.57 | .71  | .51 |
| 7150AE | 3/8-16   | .59 | 1.98 | .86  | .67 |
| 7163AF | 1/2-13   | .79 | 2.48 | 1.02 | .82 |

| METRIC |            |      |      |      |      |
|--------|------------|------|------|------|------|
| PART # | X Thread   | A    | B    | C    | E    |
| 713206 | M6 x 1.0   | 11mm | 32mm | 14mm | 10mm |
| 714008 | M8 x 1.25  | 13   | 40   | 18   | 13   |
| 715010 | M10 x 1.5  | 15   | 50   | 22   | 17   |
| 716312 | M12 x 1.75 | 20   | 63   | 26   | 21   |